

NEWSLETTER

REDEFINING URBAN BOUNDARIES

The Lo Seling Monastery Installation



TABLE OF CONTENT

01

COMPANY INTRODUCTION

02

OUR PASSION & COMMITMENT

03

PROJECT CASE STUDY: LO SELING MONASTERY

04

THE CHALLENGE: PUBLIC VS. PRIVATE LAND

05

THE SCIENCE: RUNNING BOND & BOX BASKET

06

PRODUCT SPOTLIGHT: ASIAN RECTANGULAR & I-BLOCK

07

WHY CHOOSE ASIAN CONCRETO?

08

CONTACT INFORMATION

COMPANY PROFILE

Asian Concreto is Nepal's first manufacturer of NEPAL STANDARD (NS) certified pavers & kerbstones & the country's leading name in concrete landscaping solutions.

Based in Nawalparasi, the company produces a wide range of high-quality:

- Pavers
- Tiles
- Bricks
- Hollow Blocks
- Kerbstones

Available in a variety of colors & designs to suit every need.

Equipped with a cutting-edge German production plant, Asian Concreto ensures automated manufacturing & strict quality control, delivering durable & dimensionally precise products.



OUR PASSION & COMMITMENT

Asian Concreto has been a trailblazer in the paving industry, driven by our tagline:

"Beautify Your Way"

We are dedicated to enhancing the city's aesthetic appeal while prioritizing the structural needs of our clients.

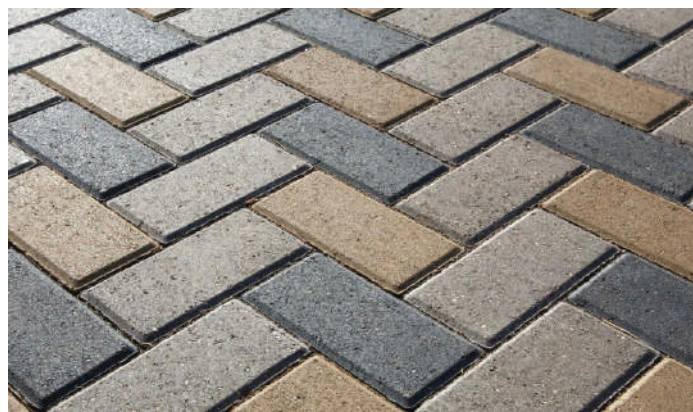
From sacred religious sites like the Lo Seling Monastery to heavy-duty industrial yards, we are committed to excellence in every block we produce.

PRODUCT RANGE:



Asian Behaton I

The universal interlocking standard.



Asian Rectangular

Modern sleekness for contemporary builds.



Asian Kerbstone

High-strength edge definition.

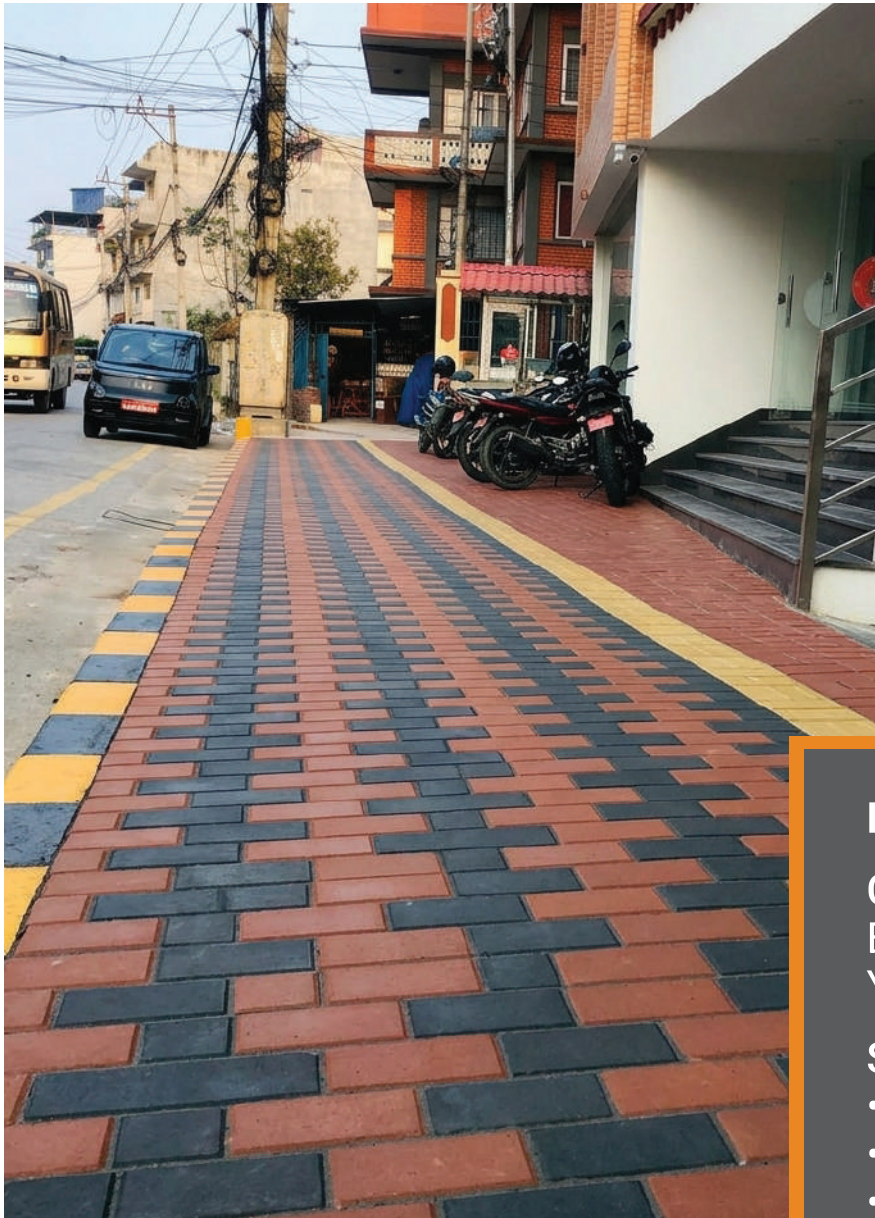
PROJECT CASE STUDY: LO SELING MONASTERY

PRECISION ENGINEERING FOR URBAN HARMONY

The recent installation at the Lo Seling Monastery Annex serves as a masterclass in urban planning.

Covering approximately 180 square meters, the project highlights the synergy between high-quality material and expert technical consultation.

When dealing with a building that serves both religious and commercial functions, the ground must be more than just “pretty” – it must be an engineered platform that manages public flow and private boundaries simultaneously.



Key Specs:

Colors:

Black + Red
Yellow + Red

Scope:

- Front entrance
- Side alleys
- Municipal footpath

THE CHALLENGE: DEFINING URBAN BOUNDARIES

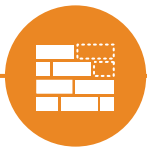
THE “PUBLIC VS. PRIVATE” DILEMMA

A major challenge at the Lo Seling site was the Site Criteria - distinguishing the public footpath area from the monastery’s personal land.

Failure Points of Traditional Solutions

Maintenance:

Paint on concrete chips away under friction.



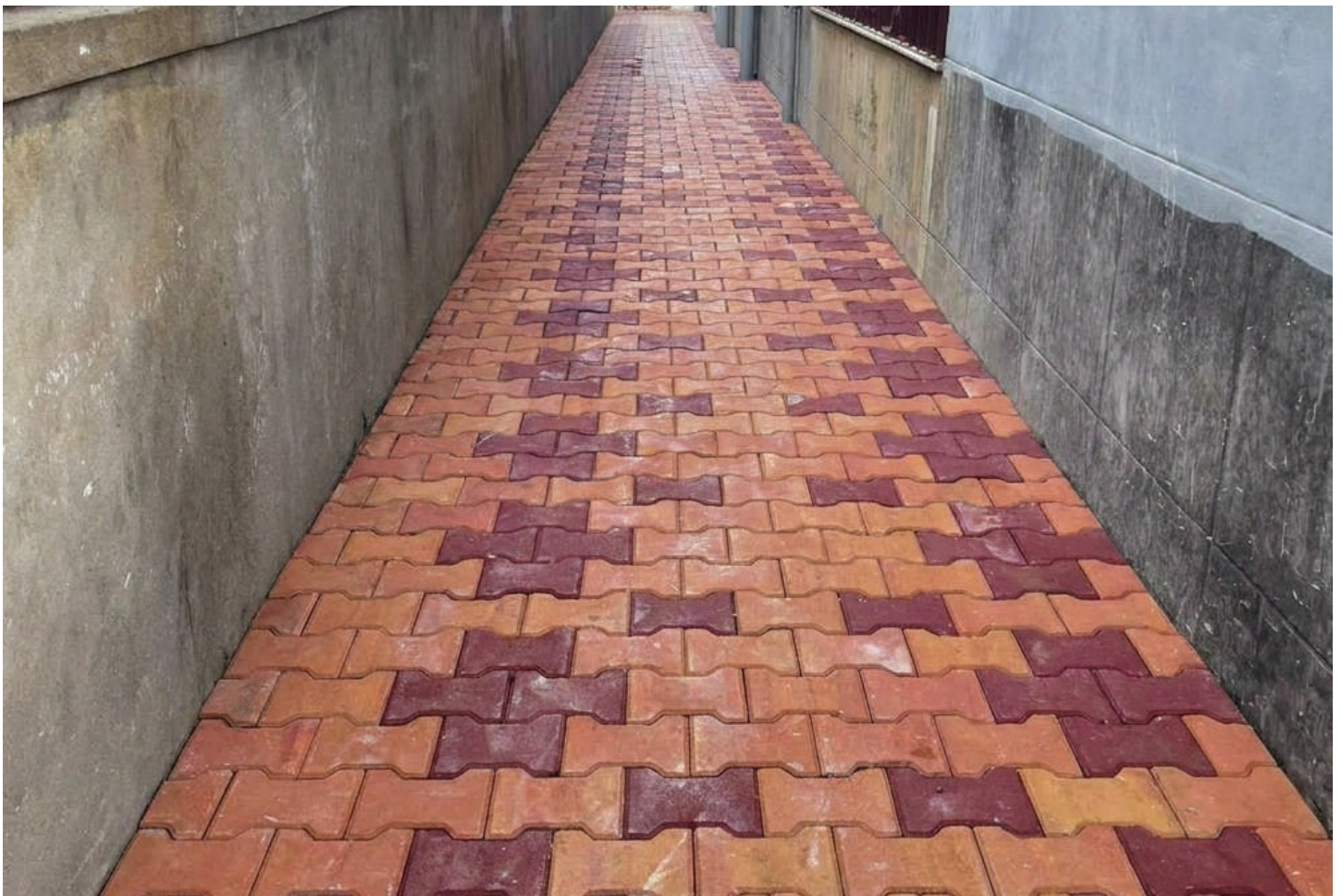
Structure:

Non-interlocking tiles spread apart over time.



Clarity:

Lack of a directional “locking” pattern causes site confusion.



THE SCIENCE: RUNNING BOND VS. BOX BASKET

THE BATTLE OF THE PATTERNS

A critical engineering decision occurred during site planning.

To maximize both aesthetics & durability, Asian Concreto engineers insisted on a zonal pattern strategy.

Pattern 1

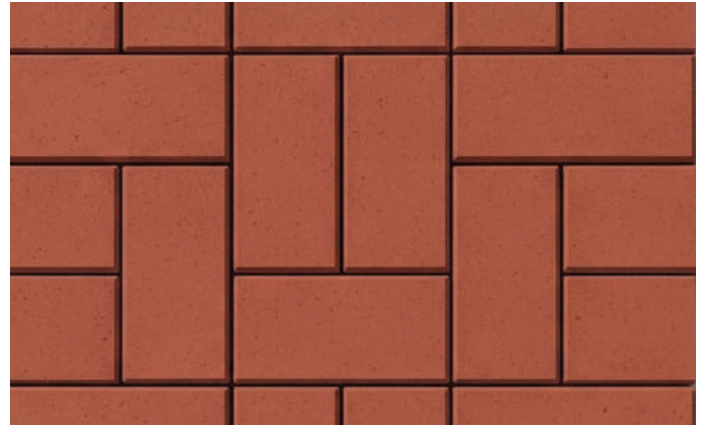


Running Bond (Entrance)

Utilized for the Asian Rectangular pavers on the private land side.

This offset pattern creates a sleek, modern flow toward the building entrance.

Pattern 2



Box Basket (Public Footpath)

Utilized for the Asian I-Blocks on the municipal side.

This pattern provides a Total Mechanical Interlock, preventing the tiles from shifting even under heavy foot traffic & rotational torque.



PRODUCT SPOTLIGHT: ASIAN I-BLOCK & RECTANGULAR

THE URBAN WORKHORSE

Product Features

Uniform Texture

High-end finish suitable for monastery architecture.

High Density

Manufactured under high pressure to ensure zero air pockets.

Color Stability

Integrated Black + Red & Yellow + Red pigments that resist UV fading.

Precision Edges

Ensures tight joints, reducing sand wash-out.



WHY CHOOSE ASIAN CONCRETO?

Unmatched Durability

Engineered to withstand Kathmandu's weather & traffic.

Technical Consultation

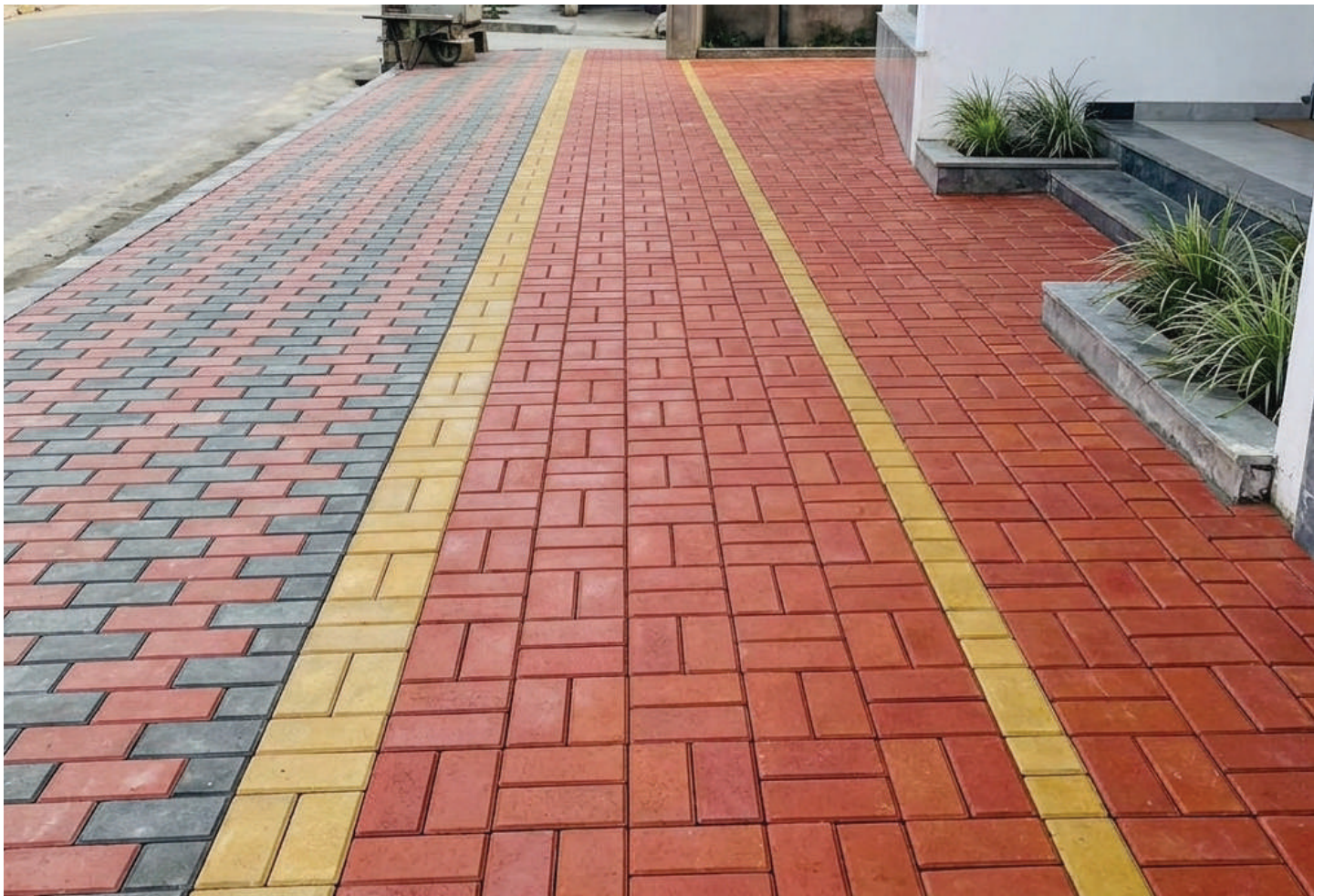
Our engineers assist in site-specific pattern design.

Effortless Maintenance

Easy cleaning & minimal long-term upkeep.

Aesthetic Versatility

Collections that match your brand or religious identity.





Why use colored tiles instead of paint?



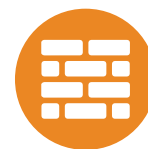
No Peeling

Paint chips under heavy tire & foot friction. These pavers are pigmented throughout the block.



High Contrast

The yellow line provides permanent visibility for safety & municipal organization.

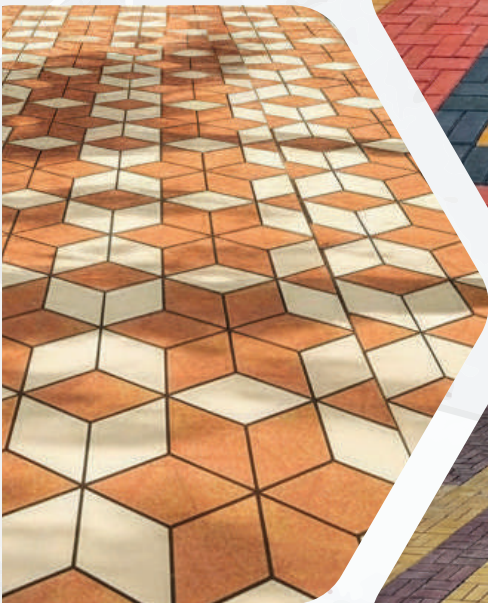


Structural Unity

The divider is not an afterthought; it is a structural part of the interlock design.

OC ASIAN CONCRETO

BEAUTIFY YOUR WAY



Sales Office

1st Floor, ShriPri Home,
Kalikasthan-29,
Kathmandu, Nepal
Mobile: +977-9802711199
Email: info@asianconcreto.com

Factory

Hakui, Ramgram-16,
Nawalparasi, Nepal
Mobile: +977-9802711199
Email: info@asianconcreto.com

Sales Inquiry

Phone (Nepal): +977-9802711199
Phone (India): +91-9335802209
Email: info@asianconcreto.com
Website: www.asianconcreto.com
Follow us on : 