

(35th Edition)

NEWSLETTER



Understanding the
Urban **Heat Island Effect**:
“What You Need to Know”





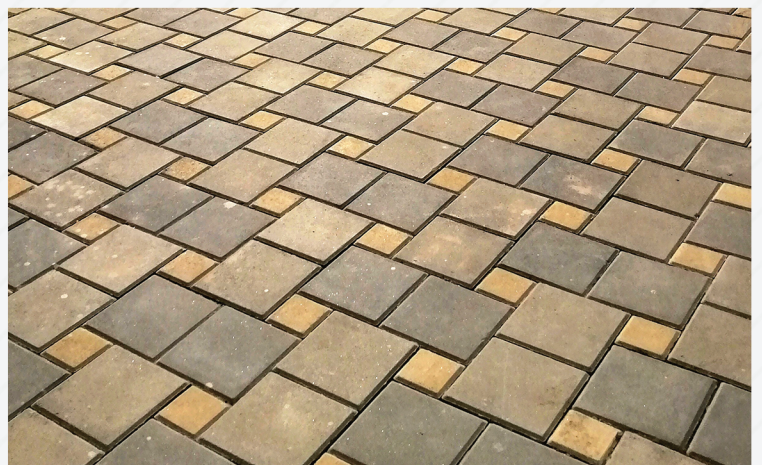
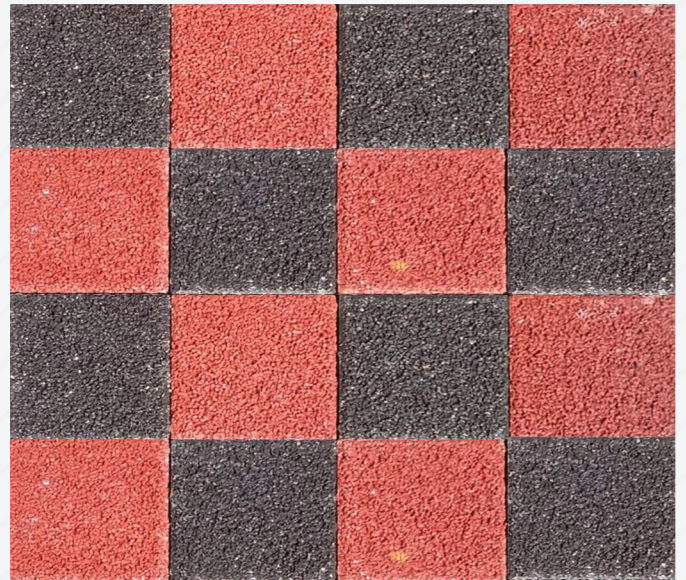
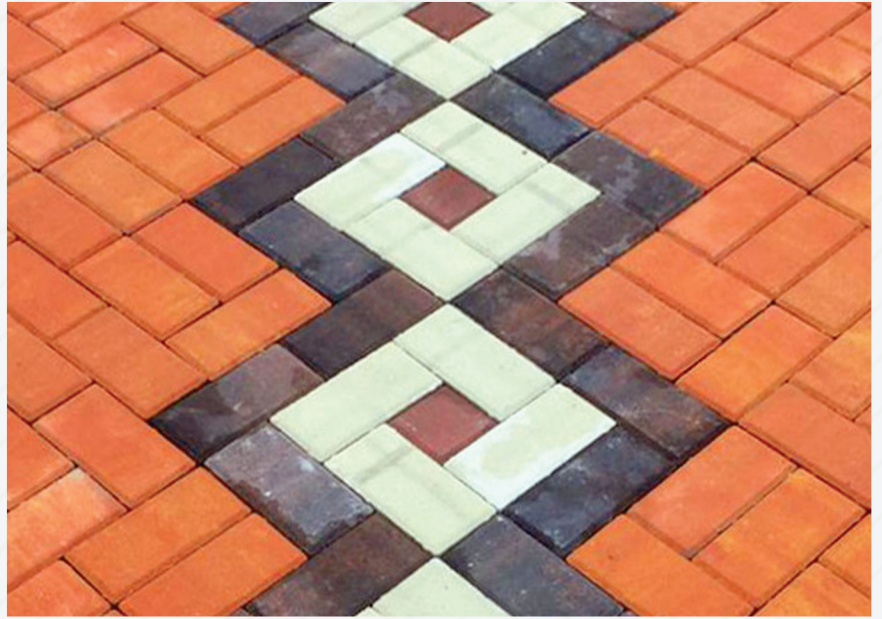
COMPANY INTRODUCTION

Asian Concreto, Nepal's first manufacturer of NEPAL STANDARD (NS) certified pavers and kerbstones, is the largest concrete landscaping company in the country. Located in Nawalparasi, it produces high-quality pavers, tiles, bricks, hollow blocks, and kerbstones in various colors and designs for all.

With a state-of-the-art German plant, Asian Concreto ensures automated production and quality control, delivering strong and accurate products. Leveraging the latest technology, the company offers stylish, durable paving solutions. Committed to quality, prompt delivery, and project involvement, Asian Concreto ensures reliability and peace of mind.

WHAT IS THE URBAN HEAT ISLAND EFFECT?

As cities grow and develop, they often become significantly warmer than their surrounding rural areas. This phenomenon, known as the Urban Heat Island (UHI) effect, occurs when natural landscapes are replaced with concrete, asphalt, and buildings. These materials absorb and retain heat more efficiently than natural environments, leading to higher temperatures in urban areas.



WHY DOES IT MATTER?

The Urban Heat Island effect has several implications for city dwellers:

Increased Energy Consumption:

Increased energy consumption due to higher urban temperatures is a major concern, as the rising demand for cooling through air conditioning rises sharply which in turn strains power grids, potentially causing shortages or outages.

Public Health Concerns:

Elevated urban temperatures pose significant public health risks, leading to heat-related illnesses like heatstroke, dehydration, and respiratory problems, particularly for vulnerable groups such as the elderly, young children, and those with pre-existing conditions.

Environmental Impact:

The UHI effect significantly impacts the environment by exacerbating air pollution and intensifying climate change through accelerated formation of ground-level ozone in urban areas. Furthermore Increased temperatures from the UHI effect drive higher energy use for cooling, often relying on fossil fuels and boosting greenhouse gas emissions.

Water Quality Issues:

Warmer urban temperatures heat up surfaces rainwater that flows over these surfaces, known as runoff, absorbs and carries this excess heat into nearby rivers, lakes, and streams that reduces levels of dissolved oxygen harming the aquatic ecosystem.



HOW ASIAN CONCRETO'S PRODUCTS HELP MITIGATE THE UHI EFFECT?

Asian Concreto has been at the forefront of developing innovative concrete solutions that contribute to reducing the Urban Heat Island effect. Here's how their products make a difference:

Cool Pavements:

Asian Concreto's concrete products are designed with reflective materials that help reduce surface temperatures by reflecting more sunlight and absorbing less heat. This technology is particularly effective in urban areas where large surface areas are covered in concrete.

Permeable Concrete:

Their permeable concrete products allow water to pass through the surface, reducing runoff and helping to cool the environment through evaporative cooling. This not only helps in lowering temperatures but also improves water management in urban areas.

Green Concrete Solutions:

Asian Concreto offers eco-friendly concrete options that incorporate materials produced with lower carbon emissions. These sustainable products help reduce the overall environmental impact of urban construction, contributing to a cooler, greener urban landscape.

Durable and Long-Lasting:

By using high-quality materials and advanced manufacturing techniques, Asian Concreto ensures that their concrete products are durable and long-lasting. This reduces the need for frequent repairs and replacements, which in turn lowers the energy and resources required for maintenance, further mitigating the UHI effect.

CONCLUSION

The Urban Heat Island effect is a growing concern as our cities continue to expand. However, with the right materials and strategies, we can mitigate its impact. Asian Concreto's innovative concrete solutions are helping to cool down our cities, making urban environments healthier, more sustainable, and more resilient to climate change. By choosing the right products, we can create a more livable future for everyone.

OUR PRODUCT STRENGTH



Manufactured in 100% Automated Plant with technology from Germany

Ensures precision and consistency in production, meeting high international standards.



Easy year round installation

Simplifies deployment regardless of weather conditions, ensuring flexibility and convenience.



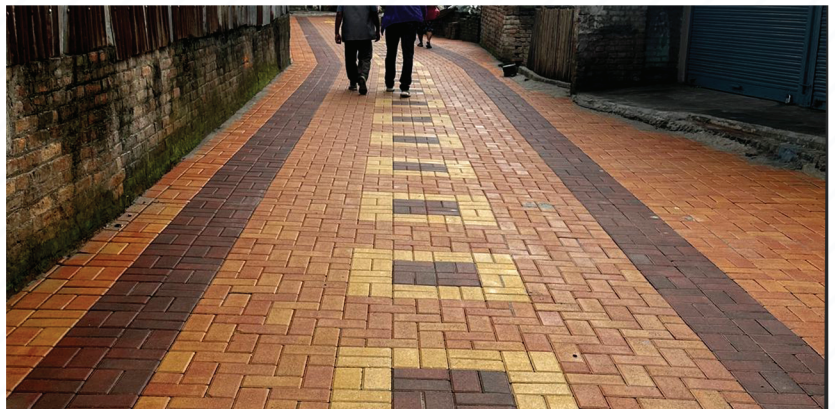
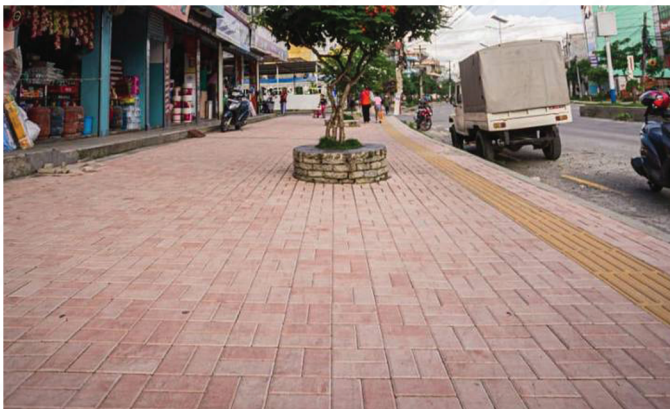
Cured in heat and humidity controlled curing chamber

Enhances durability and strength through optimal curing conditions, increasing longevity.

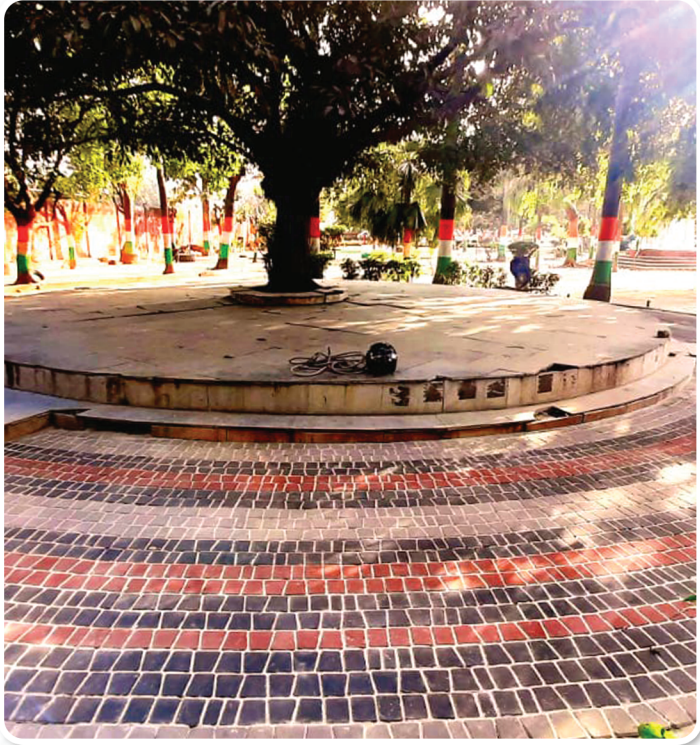


Excellent skid resistance

Provides enhanced safety and traction, suitable for various surface applications.



PROJECT SPOTLIGHT



Nagarnigam, Gorakhpur

Product Used: Asian Nostalgic

Location : India

In the vibrant heart of Gorakhpur, Nagarnigam's chautari features nostalgic pavers that create a serene and elegant space, drawing visitors in with its charm and tranquility. These classic pavers, with their timeless designs and rich textures, offer a welcoming retreat for weary travelers and locals, providing a comforting place to rest and reflect.

**Shree Saraswati Panchayat
Mandir, Manigram**

Product Used: Asian Romba

Location : Tilotama

Asian Romba has been expertly integrated into the Shree Saraswati Panchayat Mandir, enhancing the temple's traditional charm. The pavers beautifully complement the timeless architecture, blending seamlessly with the site's historical and cultural essence. This thoughtful addition not only preserves the sacred ambiance but also brings added durability and elegance to the temple grounds.



TESTIMONIALS



Anju Dangol

- Local Business Owner

After running my momo shop for over 30 years, I've seen a remarkable improvement in the pavers' quality and appearance. The old ones served their purpose but didn't add much to the overall look. Now, the new pavers not only elevate the area's aesthetics but also provide a safer, more welcoming environment for my customers. This enhancement has made my shop more inviting, and I'm proud to be in a place that prioritizes both beauty and quality.



Santoshi Shrestha

Caretaker -

Working at Ullens School, I've noticed a significant difference since the installation of the new pavers in the school compound. The smooth and durable surface has made my daily cleaning tasks so much easier and more efficient. Not only do the pavers look great, but they also require less time and effort to keep clean. It's truly a game-changer for maintaining a neat and welcoming environment for our students and staff.



OC ASIAN
CONCRETO
BEAUTIFY YOUR WAY

Sales Office

1st Floor, ShriPri Home,
Kalikasthan-29,
Kathmandu, Nepal
Mobile: +977-9802711199
Email: info@asianconcreto.com

Factory

Hakui, Ramgram-16,
Nawalparasi, Nepal
Mobile: +977-9802711199
Email: info@asianconcreto.com

Sales Inquiry

Phone (Nepal): +977-9802711199
Phone (India): +91-9335802209
Email: info@asianconcreto.com
Website: www.asianconcreto.com

Follow us on :    