



REVITALIZING

KATHMANDU'S COMMUNITY ROADS AND FOOTPATHS

NEWSLETTER (30th Edition)

- Company Introduction
- Harmonizing Urban Progression
- Before and After Scenes of Kathmandu Community Roads
- Before and After Scenes of Kathmandu Footpaths





COMPANY INTRODUCTION

Setting new standards with the introduction of NEPAL STANDARD (NS) for Pavers and Kerbstones by Nepal Bureau of Standards and Metrology; Asian Concreto is Nepal's first company to manufacture Nepal's standard certified pavers and kerbstones and also is Nepal's largest company in the concrete landscaping industry. Located strategically in the western part of Nepal in Nawalparasi, Asian Concreto produces an extensive range of superior grades concrete landscaping products such as concrete pavers, tiles, bricks, hollow blocks, and kerbstones. With the products being available in a large variety of colors, patterns, and designs to cater to a vast range of clients, the products are suitable for all kinds of architectural, residential, commercial, industrial & institutional projects. Asian Concreto's state-of-the-art German plant makes the entire process of production and quality control completely automated ensuring that the products are produced in high strength, quality, accuracy, and design. Incorporating the latest technology and business practices, Asian Concreto goes above and beyond the current market trend and competition by ensuring stylish, modern, and durable outdoor paving solutions. Asian Concreto is committed to providing quality products, prompt delivery, and active involvement in the projects till their entire completion. All of our concrete paving products are crafted to the highest quality to ensure years of enjoyment. This gives you the peace of mind to know that your Asian Concreto product will last for years to come.

Harmonizing Urban Progression with Cultural Legacy, Courtesy of Asian Concreto"

In Kathmandu's vibrant core, a profound transformation is unfolding, guided by the visionary expertise of Asian Concreto. What were once merely utilitarian pathways in the city's bustling streets are now experiencing a remarkable metamorphosis, blending urban progress seamlessly with the area's storied cultural legacy.

Asian Concreto understands the need for smart infrastructure in a growing city. The revamped footpaths don't just showcase aesthetic brilliance but also incorporate technological advancements.

- Enhancing Pedestrian Experience
- Sustainable Footprints
- Connecting Communities
- Aesthetic Finish
- Directional Aid

OUR PRODUCT'S STRENGTH



Zero Maintenance

Asian pavers never fade peel or rot, therefore you will never need to paint and will hardly ever have to clean them.



Timeless Beauty

Asian Pavers never age, they last through generations and can endure any type of sort of mechanical damage.



Evergreen Colors

Asian Pavers has combinations of colors that never go out of style, bespoke colors that can accommodate any spaces.



Energy Saving

Asian Pavers are produced from a Fully Automated German Plant which is highly energy savings.

BEFORE AND AFTER SCENES OF COMMUNITY ROADS

Community Roads, bolstered by the innovative solutions offered by Asian Concrete, has transformed the landscape of road infrastructure in Kathmandu. With Asian Concrete's advanced construction materials and techniques, the project has been able to address longstanding road issues effectively. The use of high-quality concrete has significantly improved road durability, reducing maintenance needs and enhancing safety for commuters. Asian Concrete's contributions have played a pivotal role in elevating the standards of road construction, ensuring smoother and more resilient thoroughfares throughout the Kathmandu community.



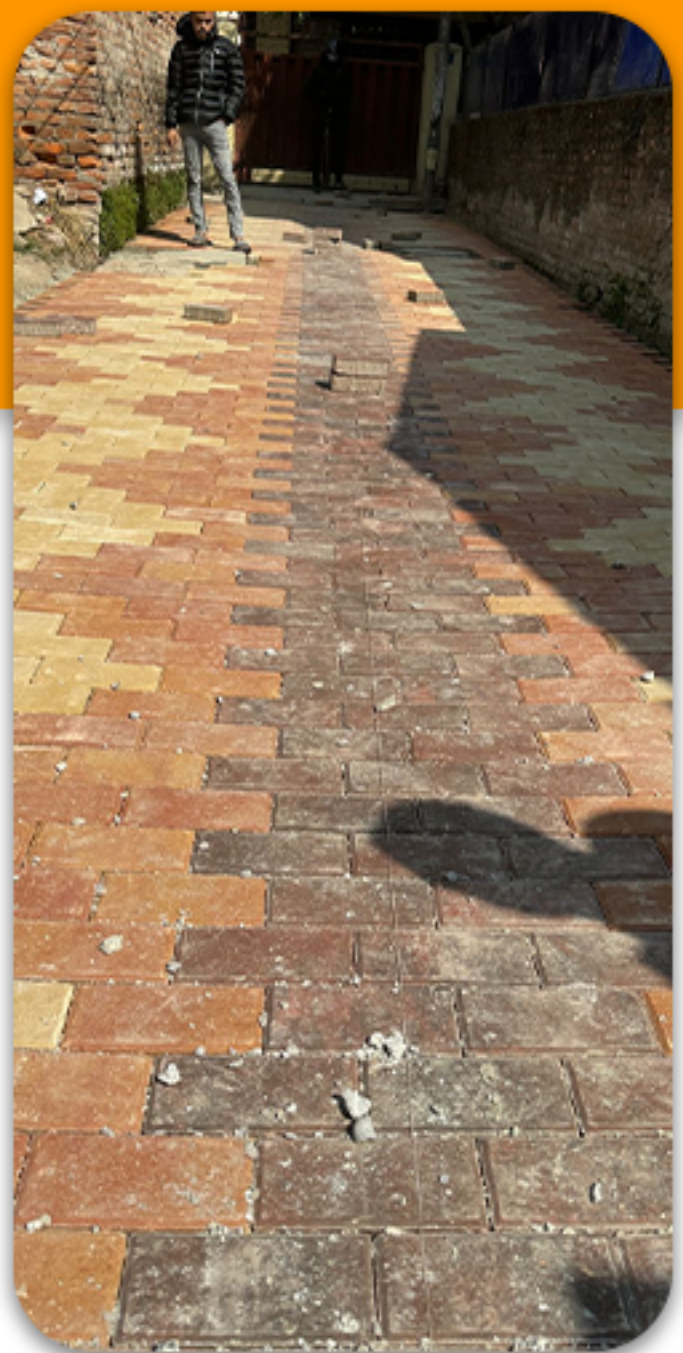
BEFORE AND AFTER SCENES OF COMMUNITY ROADS

KMC 17, THAHITY DHALKO (Rectangular Pavers)



BEFORE AND AFTER SCENES OF COMMUNITY ROADS

KMC 29, GHATTEKULO (Rectangular Pavers)



BEFORE AND AFTER SCENES OF COMMUNITY ROADS

KMC 29, NEW PLAZA (Rectangular Pavers)



BEFORE AND AFTER SCENES OF COMMUNITY ROADS

KMC 1, COMMUNITY ROAD NAGPOKHARI (Rectangular Pavers)



BEFORE AND AFTER SCENES OF COMMUNITY ROADS

KMC 16, Z-STREET (Rectangular Pavers)



BEFORE AND AFTER SCENES OF COMMUNITY ROADS

KMC 17, MANANG GALLEY (Rectangular Pavers)



SCENES OF COMMUNITY ROADS

LMC 13, COMMUNITY ROAD (Rectangular Pavers)



BEFORE AND AFTER SCENES OF COMMUNITY ROADS

LMC 1, KANDEUTA (Rectangular Pavers)



BEFORE AND AFTER SCENES OF COMMUNITY ROADS

LMC 13, DAMODAR MARG (Rectangular Pavers)



BEFORE AND AFTER SCENES OF COMMUNITY ROADS

LMC 13, ADARSHA ROAD (Asian Square)



BEFORE AND AFTER SCENES OF COMMUNITY ROADS

LMC 13, SUGAM TOLE (Rectangular Pavers)



BEFORE AND AFTER SCENES OF COMMUNITY ROADS

LMC 1, KUPONDOLE (Rectangula Pavers)



SCENES OF COMMUNITY ROADS

LMC 1, KUPONDOLE, LALITPUR
(Rectangular Pavers)



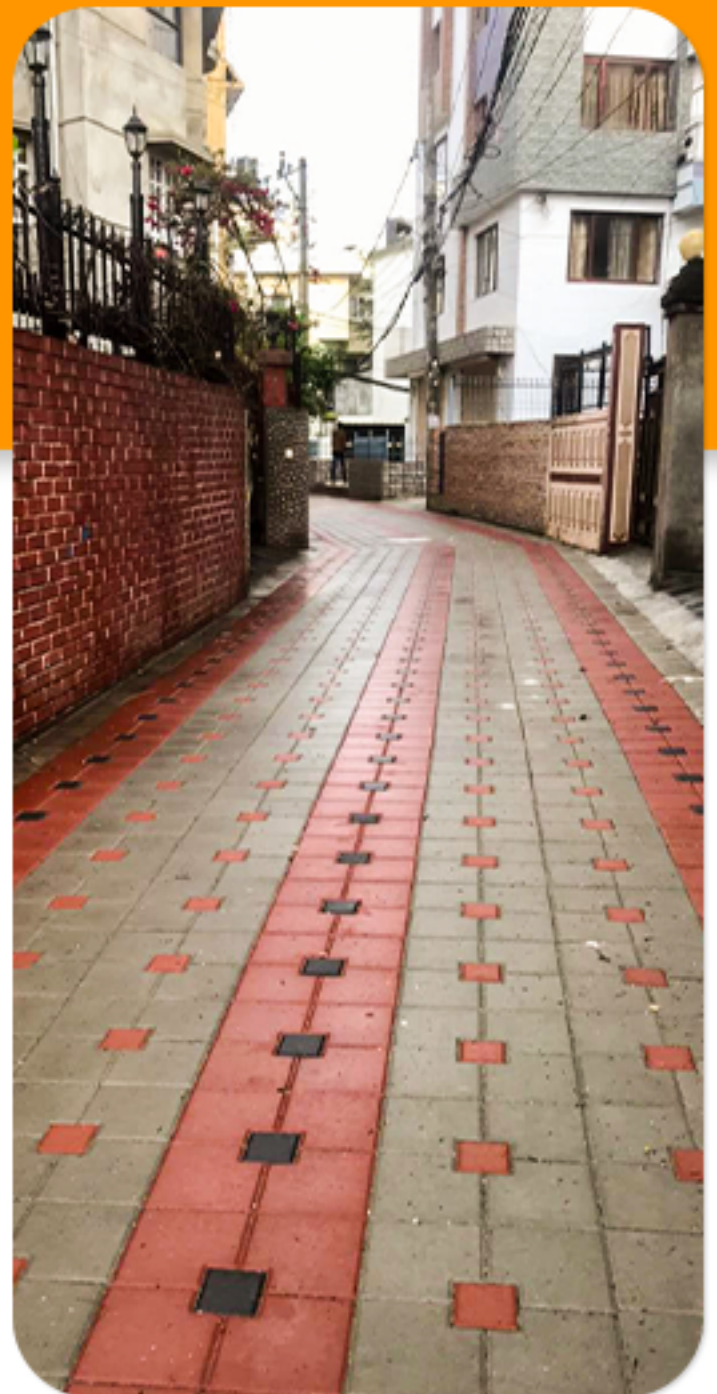
BEFORE AND AFTER SCENES OF COMMUNITY ROADS

LMC 13, MILIJULI TOLE & KUSUNTI (Asian Inerlock)



SCENES OF COMMUNITY ROADS

LMC 13, KUSUNTI, EKANTAKUNA (Asian Square)



SCENES OF COMMUNITY ROADS

LMC 1, CHUDA BIKRAM STREET (Rectangular Pavers)



BEFORE AND AFTER SCENES OF COMMUNITY ROADS

THECHO 12 MAYOR SAAB TOLE (Rectangular Pavers)



BEFORE AND AFTER SCENES OF FOOTPATHS

Experience the transformative journey of footpaths through before and after scenes. Witness the remarkable evolution from uneven and deteriorating paths to well-paved, safe walkways, providing enhanced accessibility and comfort for pedestrians.



BEFORE AND AFTER SCENES OF FOOTPATHS

DALLU BRIDGE (Rectangular Pavers)



BEFORE AND AFTER SCENES OF FOOTPATHS

KMC 10, BANESHWOR (Rectangular Pavers)



SCENES OF FOOTPATHS

KUPONDOLE TO PULCHOWK (Rectangular Pavers & Asian Tactile)



BEFORE AND AFTER SCENES OF FOOTPATHS

LAINCHAUR TO LAZIMPAT (Rectangular Pavers & Asian Tactile)



BEFORE AND AFTER SCENES OF FOOTPATHS

TINKUNE TO GAUSHALA (Rectangular Pavers & Asian Tactile)



BEFORE AND AFTER SCENES OF FOOTPATHS

LMC 6, ANAMNAGAR (Rectangular Pavers & Asian Tactile)



SCENES OF FOOTPATHS

LMC FOOTPATH, PULCHOWK, LALITPUR (Rectangular Pavers & Asian Tactile)



SCENES OF FOOTPATHS

PULCHOWK (Rectangular Pavers & Asian Tactile)



SCENES OF FOOTPATHS

SINGHA DURBAR FOOTPATH (Rectangular Pavers & Asian Tactile)



SCENES OF FOOTPATHS

THAMEL, KATHMANDU
(Rectangular Pavers & Asian Tactile)



SCENES OF FOOTPATHS

THAPATHALI, MAITIGHAR (Rectangular Pavers & Asian Tactile)



OC ASIAN CONCRETO

BEAUTIFY YOUR WAY



Sales Office

1st Floor, ShriPri Home,
Kalikasthan-29,
Kathmandu, Nepal

Mobile: +977-9802711199

Email: info@asianconcreto.com

Factory

Hakui, Ramgram-16,
Nawalparasi, Nepal

Mobile: +977-9802711199

Email: info@asianconcreto.com

Sales Inquiry

Phone (Nepal): +977-9802711199

Phone (India): +91-9335802209

Email: info@asianconcreto.com

Website: www.asianconcreto.com

