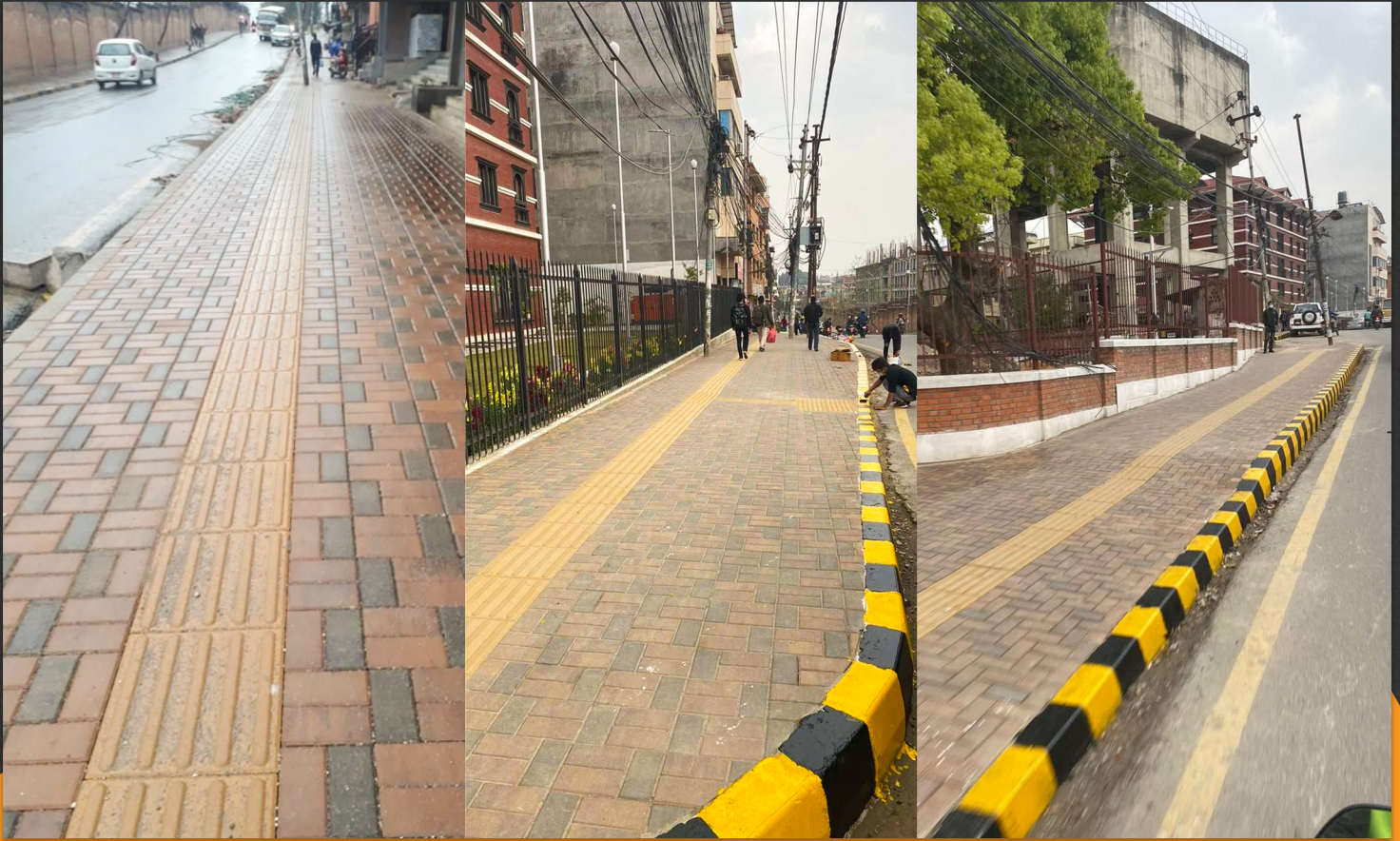




NEWSLETTER (25th Edition)

**“Transforming Kathmandu’s Footpaths:
A Seamless Blend of Urban Evolution and Cultural Heritage
by Asian Concreto”**

INTRODUCTION



In the heart of Kathmandu, the bustling streets are witnessing a transformative touch, courtesy of Asian Concreto's visionary team. The city's footpaths, once merely functional, are now undergoing a remarkable change that harmonizes urban development with rich cultural heritage.

Smart Infrastructure for Smart Kathmandu:

Asian Concreto understands the need for smart infrastructure in a growing city. The revamped footpaths don't just showcase aesthetic brilliance but also incorporate technological advancements.

- Enhancing Pedestrian Experience
- Sustainable Footprints
- Connecting Communities
- Aesthetic Finish
- Directional Aid

Connecting Communities

DALLU BRIDGE TO DHALKU

Contractor: Bishawajit Nirman Sewa

Contractor's Name: Sukdev Lama

Dallu, nestled in the Bagmati Province of Kathmandu, is a neighborhood in close proximity to the suburbs of Chhauni and Kimdol. Under the Asian Concrete project, a significant transformation has occurred, extending over 5 km. The initiative involved the installation of new pavers and directional tiles, revitalizing the footpaths, and seamlessly connecting Kathmandu to one of its most popular tourist destinations, Thamel.



LAINCHAUR TO LAZIMPAT

Contractor: Kamaljit Nirman Sewa

Contractor's Name: Amar Shrestha

Lainchaur offers a blend of residential spaces, making it a diverse and dynamic part of the city. The area has witnessed urban development, contributing to its vibrancy and attractiveness. One of the major projects is done by Asian concerto's paver placement that extends to Lazimpat.

LAZIMPAT TO MAHARAJGUNJ

Contractor: Kamaljit Nirman Sewa

Contractor's Name: Amar Shrestha

Lazimpat offers a blend of residential spaces, making it a diverse and dynamic part of the city. The area has witnessed urban development, contributing to its vibrancy and attractiveness. One of the major projects is done by Asian concreto's paver placement that extends to Maharajgunj.



SORAKHUTTE TO BALAJU

Contractor: Kamaljit Nirman Sewa

Contractor's Name: Amar Shrestha

Sorkhutte, situated in the Kathmandu Valley, is renowned for its central position and close proximity to significant commercial and cultural hubs, linking it to Balaju, another locality in the northwest part of Kathmandu. Balaju, positioned in the heart of Kathmandu, is in close proximity to iconic landmarks like the Thamel tourist district and the Kathmandu Durbar Square. The recent project undertaken by Asian Concreto has enhanced the area by incorporating pedestrian walkways, disabled access, and aesthetic improvements, further enhancing the overall appeal of the locale.

LAINCHAUR TO SORAKHUTEE

Contractor: Kamaljit Nirman Sewa

Contractor's Name: Amar Shrestha

Lainchaur provides a mix of residential spaces, creating a diverse and vibrant section of the city. Sorkhutte, located in the Kathmandu Valley, is well-known for its central location and its nearness to major commercial and cultural centers, connecting it to Balaju, another district in the northwest part of Kathmandu. The recent initiative led by Asian Concreto has improved the area by introducing pedestrian pathways, accessible features for disabled individuals, and aesthetic enhancements, thereby elevating the overall attractiveness of the locality.



TINKUNE TO GAUSHALA

Contractor: Kamaljit Nirman Sewa

Contractor's Name: Amar Shrestha

Tinkune and Gaushala, both commercial hubs with businesses, offices, and educational institutions, have recently seen improvements by Asian Concreto. Pedestrian pathways, accessible features, and aesthetic enhancements have elevated the overall attractiveness of these localities.

Connecting Communities

DALLU BRIDGE TO DHALKU

Contractor: Bishawajit Nirman Sewa

Contractor's Name: Sukdev Lama

Dallu, nestled in the Bagmati Province of Kathmandu, is a neighborhood in close proximity to the suburbs of Chhauni and Kimdol. Under the Asian Concrete project, a significant transformation has occurred, extending over 5 km. The initiative involved the installation of new pavers and directional tiles, revitalizing the footpaths, and seamlessly connecting Kathmandu to one of its most popular tourist destinations, Thamel.



LAINCHAUR TO LAZIMPAT

Contractor: Kamaljit Nirman Sewa

Contractor's Name: Amar Shrestha

Lainchaur offers a blend of residential spaces, making it a diverse and dynamic part of the city. The area has witnessed urban development, contributing to its vibrancy and attractiveness. One of the major projects is done by Asian concerto's paver placement that extends to Lazimpat.

TESTIMONIALS



AMAR SHRESTHA
(Contractor)

"I am delighted to express my sincere appreciation for the exceptional products and services provided by Asian Concreto. The quality of their products is truly commendable, reflecting a commitment to excellence. The recent project undertaken by the Asian Concreto team was executed with remarkable efficiency. The team's unwavering dedication was evident as they worked tirelessly day and night to ensure the project's swift completion. Their ability to finish the work on time without causing any disruption to the public is truly commendable. I am thoroughly impressed with the high standards of quality, the promptness of their service, and the professionalism displayed by the Asian Concreto team. I wholeheartedly recommend their products and services to anyone seeking top-notch quality and a seamless project execution experience."

ASIAN CONCRETO

BEAUTIFY YOUR WAY



Nepal Sales Office
1st Floor, ShriPri Home,
Kalikasthan-29,
Kathmandu, Nepal
Mobile: +977-9802711199
Email: info@asianconcreto.com

Factory
Ramgram-16, Hakui,
Nawalparasi, Nepal
Mobile: +977-9802711199
Email: info@asianconcreto.com



www.asianconcreto.com

Follow us on     Asian Concreto Pvt. Ltd.