



**OC ASIAN**  
**CONCRETO**  
BEAUTIFY YOUR WAY



**ASIAN UNIPAVERS**

Uni Paving Stone

# ASIAN UNI PAVERS

## Uni Paving Stone

### Uniform. Tough. Aesthetic

Asian Uni Pavers combine the advantages an Interlocking design that gives a strong foundation, with the aesthetics of simple and easy to the eye style. With these pavers, your spaces will become beautiful as well as rugged.

#### Special Features:

- Manufactured in 100% Automated Plant with technology from Germany
- Cured in heat and humidity controlled curing chamber
- Dust and slush-free, aesthetically pleasant surroundings
- Excellent skid resistance

#### Advantages:

- Quick and easy, year round installation
- Simple and reusable
- Cost-effective, less time-consuming

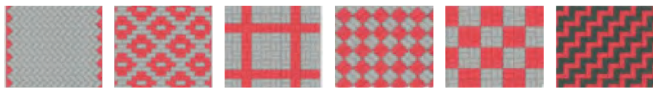
#### Where to be used:

Parking Areas | Driveways | Rural and Community Roads | Housing Colonies | Large Scale industrial Areas | Heavy Traffic Load Bearing Areas

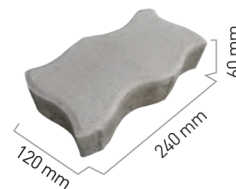
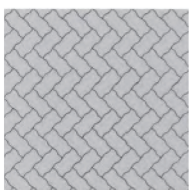
#### Colour Range:



#### Patterns:



#### Laying Patterns:



#### Specifications:

Parameters	Dimensions
Length (mm)	240
Width (mm)	120
Thickness (mm)	60
Pavers/m <sup>2</sup>	34.72
Pavers/ft <sup>2</sup>	3.23
Compressive Strength (N/mm <sup>2</sup> )	≥ 45

#### Load Factor:



ASIAN CONCRETO PVT. LTD.



**INDIA SALES OFFICE:**  
Plot No. 84, Palm Paradise, Ramgarh Taal, Gorakhpur, UP, India  
Phone: +91-8127585858

**NEPAL SALES OFFICE:**  
1st Floor, ShriPri Home, Kalikasthan - 29, Kathmandu, Nepal  
Phone: +977-9802711199

**FACTORY:**  
Ramgram - 16, Nawalparasi, Nepal.  
Phone: +977-9802711199

Email: [info@asianconcreto.com](mailto:info@asianconcreto.com)  
Website: [www.asianconcreto.com](http://www.asianconcreto.com)  
Follow us on [f](#) [@](#) [v](#) [i](#)  
Asian Concreto Pvt. Ltd.

## Technical Specification of Precast Concrete Pavers (Paving Block)

Product : Unipaver (240x120x60)mm

S.No.	Description	Asian Concreto	Standard References
			Nepal Standard 593:2077
1	<b>Dimension of Specimen</b>		
	Length mm	240	As per Actual
	Width mm	120	As per Actual
	Thickness mm	60	As per Actual
	Aspect Ratio mm	4	Maximum 4
	Arris/ Chamfer mm	7.2	Min 5, Max 7
	Squareness mm	Nil	Nil
	Thickness of Wearing Layer mm	> 6	Minimum 6mm
2	<b>Dimension Tolerance</b>		
	Length mm	± 1mm	± 2mm
	Width mm	± 1mm	± 2mm
	Thickness mm	± 1mm	± 1mm
	Squareness mm	± 0mm	± 2mm
	Thickness of Wearing Layer mm	(+) 2mm	(+) 2mm
	Chamfer mm	(+) 0.2mm	± 1mm
3	<b>Surface Area of Paver</b>	288	As per Actual
	cm <sup>2</sup>		
4	<b>Volume of Specimen</b>	1728	As per Actual
	cm <sup>3</sup>		
5	<b>Minimum Compressive Strength N/mm<sup>2</sup></b>	≥ 40	35 N/mm <sup>2</sup>
	28 Days		
6	<b>Water Absorption</b>	< 6%	Maximum 6%
	(%)		
7	<b>Dry Density</b>	2250	2250 kg/m <sup>3</sup> , ± 50 kg/m <sup>3</sup>
	kg/m <sup>3</sup>		
8	<b>Abrasion Resistance</b>	< 2	Maximum 3mm
	mm		
9	<b>Face Layer Pigment (Color)</b>	Synthetic or Natural	Synthetic or Nautral (Zinc compound or organic dyes or Lead pigments shall not be used)
10	<b>Lable and Marking</b>		
	Concrete paver block package shall be marked with the following information suitably:		
	a) Identification of the manufacturer,		
	b) Grade of paver blocks, and		
	c) Date of manufacture.		
Note: The product should be adequately packed to identify above and also ensure products from manufacturer facility to the buyer facility during loading transport, unloading do not suffer any physical damage including chipping, cracking, deform or any other damage from actual product specifications			