

# ASIAN BEHATON I

## I Pavers

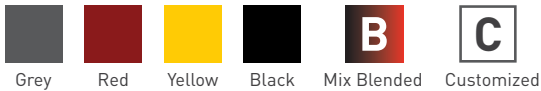
Interlocking. Heavy-Duty.  
Hassle-Free.

Behaton I Pavers from Asian Concrete are best used in extreme conditions for their great strength and stability. Behaton I Paver's structural shape contributes tremendous interlocking strength and superlative resistance to wear and mechanical damage, making it an ideal paving solution for areas that bear heavy-duty vehicular traffic. It provides hassle-free solutions irrespective of terrain and environment.

### WHERE TO BE USED:

Walkways | Parking Areas | Driveways |  
Rural and Community Roads | Large Scale Industrial Areas

### COLOUR RANGE:



### LOAD FACTOR:



### SPECIAL FEATURES

- Manufactured in 100% Automated Plant with technology from Germany
- Easy year round installation
- Cured in heat and humidity controlled curing chamber
- Excellent skid resistance

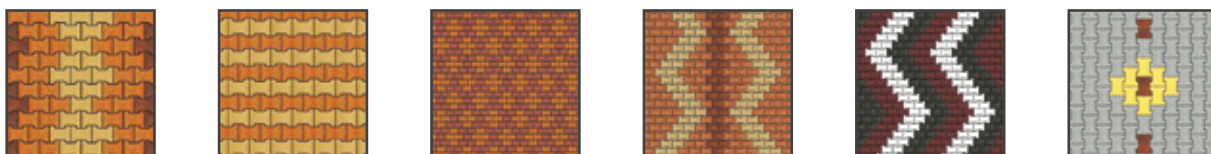
### ADVANTAGES

- Cost-effective, less time-consuming
- Simple and reusable
- Quick installation
- Used to create one-of-a-kind landscape designs

### SPECIFICATIONS

Dimensions (mm) (Length x Breadth x Thickness)	Pavers/m <sup>2</sup>	Pavers/ft <sup>2</sup>	Compressive Strength (MPa)
200 x 165 x 50	36.101	3.349	≥30
200 x 165 x 80	36.101	3.349	≥40

### LAYING PATTERNS



#### ASIAN CONCRETO LTD.



#### SALES OFFICE:

1<sup>st</sup> Floor, ShriPri Home,  
Kalikasthan -29,  
Kathmandu, Nepal.  
Phone: +977-9802711199  
Email: info@asianconcreto.com

#### FACTORY:

Hakui, Ramgram-16,  
Nawalparasi, Nepal.  
Phone: +977-9802711199  
Email: info@asianconcreto.com

#### SALES INQUIRY:

Phone (Nepal): +977-9802711199  
Phone (India): +91-9335802209  
Email: info@asianconcreto.com  
Website: www.asianconcreto.com  
Follow Us On: