

The image features a top-down view of interlocking concrete paving stones in a light grey color. A bright yellow-green tennis ball is placed on one of the stones. The stones are set on a bed of dark, multi-colored gravel. The entire scene is framed by a white, angular border that follows the shape of the paving stones. In the top right corner, there is a white rectangular area containing the company logo and tagline.

**OC ASIAN**  
**CONCRETO**  
BEAUTIFY YOUR WAY

**ASIAN**

**BEHATON I**

— I Paving Stone —

# ASIAN BEHATON I

## I Paving Stone

**Interlocking. Heavy-Duty. Hassle-Free.**

I Paving Stone from Asian Concrete is best used in extreme conditions for its great strength and stability. I Paving Stone's structural shape contributes to tremendous interlocking strength and superlative resistance to wear and mechanical damage, making it an ideal paving solution for areas that bear heavy-duty vehicular traffic. It provides hassle-free solutions irrespective of terrains and environments.

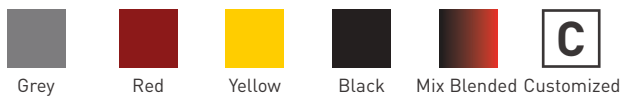
### Advantages:

- Cost-effective, less time-consuming
- Easy, year round installation
- Simple and reusable
- Quick installation

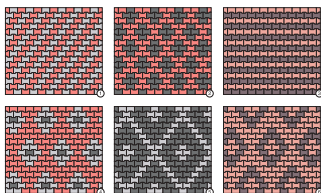
### Where to be used:

Large-scale industrial areas | Warehouses  
 Parking lots | Heavy traffic-load-bearing areas

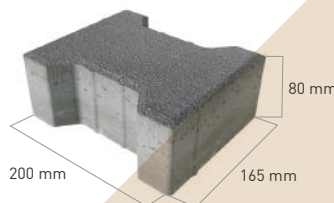
### Colour Range:



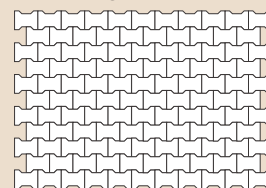
### Patterns:



### Load Factor:



### Laying Patterns:



### Specifications:

Item	Dimensions
Length (mm)	200
Width (mm)	165
Thickness (mm)	50 / 80
Pavers/m <sup>2</sup>	36.23
Pavers/sq.ft	3.42
Compressive strength (N/mm <sup>2</sup> )	≥ 30 / ≥ 40

ASIAN CONCRETO PVT. LTD.

Made in Nepal



**KATHMANDU OFFICE:**  
 Tripura Marg, Teku (Opposite Laxmi Bank),  
 Kathmandu, Nepal.  
 Phone: +977-9802711189

**FACTORY:**  
 Ramgram - 16,  
 Nawalparasi, Nepal.  
 Phone: +977-9802711167

Email: info@asianconcreto.com  
 Website: www.asianconcreto.com  
 Follow us on   
 Asian Concrete Pvt. Ltd.